



**1/4" Color CCD DSP
High-resolution Weatherproof
Day/Night Zoom Camera**

VCC-XZ200P

PAN-FOCUS
Technology in Perspective

DAY NIGHT



**All-In-One design with Lens,
Housing and Metal fittings Included
IP66 Rated Enclosure**

Built-in x2.6 Motorized Zoom
Pan-Focus Lens (f = 2.8 to 7.3 mm) No focus adjustments



Pan-focus lens image



Vari-focal lens image

Comparative images are representations only.

520TVL Resolution
Network/UTP video
Transmission connectivity
(with board option)

**Remote Camera Setting
by VAC-70**

Made in Japan

The product introduced here is manufactured in Japan utilizing advanced technologies and quality control.

ALL-in-one design weatherproof camera



**1/4" Color CCD DSP High-resolution
Weatherproof Day/Night Zoom Camera**

VCC-XZ200P

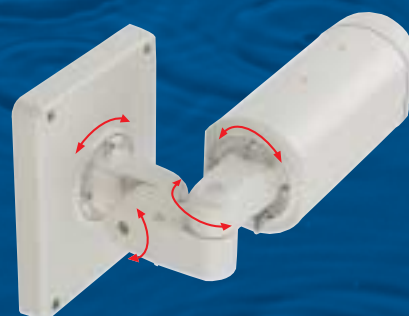
VCC-XZ200P features horizontal resolution of 520 TV lines or more, a pan-focus lens that brings the entire screen into focus, and a body that integrates a weatherproof housing (IP66 class) and wall-mount fittings for easy installation, and reduced maintenance. The combination of an IP66 housing and a day/night camera makes it possible to install the camera anywhere for 24 hour monitoring. The built-in motion detector catches any change or movement within the surveillance area and offers an ability to review all activity in recorded mode. Options for VCC-XZ200P include support for networking, enabling the construction of a more robust surveillance system.

Integrated unit for easy installation

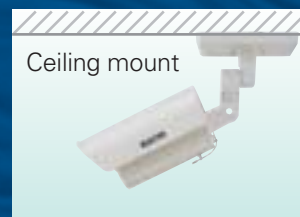
An all-in-one package with auto-focus camera, lens, weatherproof housing, wall-mount fittings and even a shade. The use of the shade is discretionary, but it is useful under certain circumstances. Without the shade, the camera is very compact and ready for set-up. No additional accessories are needed.

Adjustable Arm

The angle of the arm is adjustable in all directions. Since the flexible joint is secured by screws, the arm maintains its position without sagging over time. In addition, a safety wire is included to prevent accidents. Installation on a ceiling or wall is easy without any additional parts. The arm also encloses the wiring to prevent tampering.



Wall mount



Ceiling mount

PAN-FOCUS
Technology in Perspective

**SANYO proposes the
x2.6 pan-focus lens to
offer a focused view of a broader area**

With a vari-focal lens, objects that are in front of or behind the focus point are blurred. To eliminate this problem, a new technology was developed to increase the depth of field so that everything in the field of view is in focus at the same time. SANYO has been one of the leaders in the development of this technology and has successfully commercialized the x2.6 pan-focus lens that offers an image with greater depth of field. The new lens makes it possible to capture a clear image of objects in the background.



Image with a pan-focus lens

- Clear focusing on all shooting area with great depth of field (D.O.F.)
- No focus adjustments
- Remote zoom adjustment by camera control unit, VAC-70



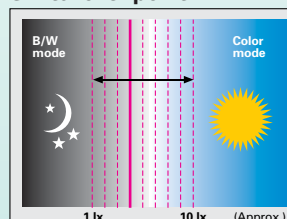
Image with a vari-focal lens

- Clear focusing to a specific area
- Manual focus adjustments
- Manual view angle adjustments

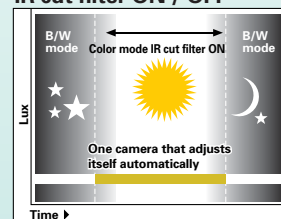
DAY NIGHT Intelligent switching from color to B/W

Selecting color or B/W mode can be done automatically by the camera, or else manually. In addition, the user is allowed to change the switchover point from 1 to 10 lx (nominal) using the on-screen menu. The integration of color and high sensitivity B/W modes in one camera makes it a versatile tool for any surveillance need. It is truly an all-in-one camera.

Switchover point



IR cut filter ON / OFF





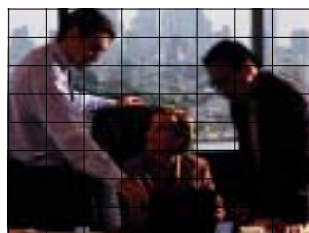
Flexible Motion Detector

The Intelligent Motion Detector enables reliable and accurate motion detection by analyzing the "magnitude of movement" and the "size of object" from changes in picture brightness. When a moving object is detected, VCC-XZ200P can send an alarm signal* to external units and/or switch to the optical zoom mode that can be preset either to x1.0, x1.4, x2.0, or x2.6 zoom. *Only when using VA-20LAN or VA-20ST board option.



Multi-spot photometry system (64-section)

The screen is divided into 64 sections on which luminous intensity is measured separately to determine the lighting/backlight conditions of all objects. This makes it possible to apply optimum backlight compensation even for peripheral objects and moving objects.



Privacy Masking

When there is a house or even an object as small as a window within the camera frame, it is possible to mask the area so that it will not appear on the monitor screen to protect other people's privacy. Up to 4 rectangular masks of arbitrary size can be set per screen. These masking areas may be protected with a 4-digit (max.) password.

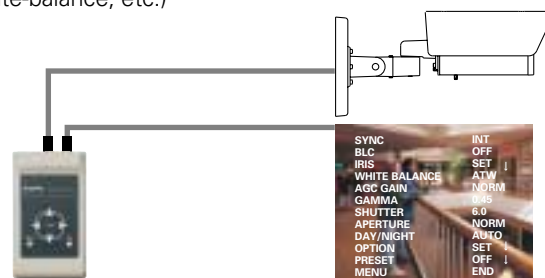


AC / DC Power Source Compatibility

VCC-XZ200P comes with power supply terminals of 24 V AC (50 Hz, $\pm 10\%$) and 12 to 15 V DC. The unit automatically recognizes and switches to the correct mode when power is supplied.

Camera Control Unit VAC-70 (sold separately)

The remote setup capability of the unit gives a feeling that the user has the camera right beside the monitor, providing an on-screen menu for everything needed to set up VCC-XZ200P. (Intelligent digital motion detector, backlight compensation, white-balance, etc.)



Expandability

An optional expansion board adds a network connection to the camera to expand the system's capability.

Network board VA-20LAN (sold separately)

This expansion board for LAN connection enables SANYO color CCD cameras to connect to a network. The user can operate a network connected camera using a web browser (Internet Explorer). It comes with the VA-SW3050LITE viewer software.

SSP+Twisted pair board VA-20ST (sold separately)

Coaxial control : SSP / H-SSP / PELCO-C
RS-485: SSP / PELCO-D
Twisted pair terminal (CAT5) for video signal:
NVT built-in UTP video

NOTE: The VA-20LAN and the VA-20ST cannot be used concurrently.

Heater board VA-50H (sold separately)

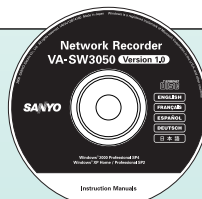
The heater board protects the camera from cold weather. It allows the camera to operate at temperatures as low as -30°C . (24 V AC only)

Network Recorder VA-SW3050 (sold separately)

The network recorder VA-SW3050 is an application program that extends the network operation of the camera. By installing this software and the VA-20LAN board in each SANYO camera, it is possible to monitor images from multiple cameras in a split screen and access and operate up to 128 cameras over a network. This is in addition to standard features such as monitoring and recording live images, playing back recorded video, etc. It is an exclusive software package for CCD cameras that even enables alarm and timer recordings.

Network Recorder VA-SW3050 (sold separately)

Compression	JPEG
Picture resolution	720 x 286 / 640 x 480 / 360 x 286 / 180 x 143 pixels
Picture quality	5 levels (Basic, Normal, Enhanced, Fine, Super Fine)
Frame rate	Max. 25 IPS (720 x 286)
Network protocols	TCP, UDP, HTTP, HTTPS, SMTP, NTP, DHCP, FTP, UPnP
Number of simultaneous log-in users	Up to 16 users (admin: only by one person)
System environment	OS: Windows® 2000 SP4 / WWindows® XP HOME/PRO SP2 CPU: Pentium® 4 2.0GHz or later Memory: 512MB or more Display: 1,024 x 768 pixels, 16-bit color Browser: Internet Explorer 6.0 or later



Network Recorder
VA-SW3050




MODEL	VCC-XZ200P
Scanning system	PAL standard 625 lines, 50 fields/sec.
Image sensor	1/4" Interline transfer method CCD (3.6 x 2.7 mm)
Number of pixels	Total: 759 (H) x 596 (V), Effective: 752 (H) x 582 (V)
Horizontal resolution	More than 520 TV lines
Minimum illumination (approx.)	50IRE 1.2 lx (F1.9, Gain High, color mode) / 0.06 lx (F1.9, Gain High, B/W mode) 20IRE 0.48 lx (F1.9, Gain High, color mode) / 0.024 lx (F1.9, Gain High, B/W mode)
Video output	1.0 V (p-p) (75 Ω, composite)
Video S/N ratio	More than 50 dB (AGC OFF)
Backlight compensation	ON (multi-spot photometry [High/Normal], Center-zone photometry) / OFF
White balance	ATW / AWC / Manual (MWB) / Outdoor (3200) / Indoor (5600) / Fluorescent (FLUO)
Gain control	High / Normal / Off
Gamma	0.45 / 1
Lens	Built-in motorized zoom pan-focus auto iris lens, f=2.8 to 7.3 mm (2.6x), F1.9 to 3.0
Electronic shutter	1/50, 1/120, 1/250, 1/500, 1/1000, 1/2000, 1/4000, 1/10000 sec.
Motion detector	On / Off: Motion zoom function
Privacy masking	On / Off: Max. 4 masked locations
Alarm input	1 (NO / NC), with alarm zoom function
Character display	On / Off, Camera ID max. 16 characters, adjusting position
Synchronizing system	Internal synchronization / Line lock
Day/Night mode	Auto (High/Low) / Color / B/W: External control
Aperture compensation	High plus / High / Normal / Off
Environmental conditions	Operating Temperature: -10°C to +50°C (+14°F to +122°F), Humidity: within 90% RH Storage Temperature: -20°C to +70°C (-4°F to +158°F), Humidity: within 70% RH
Power supply	12 V to 15 V DC / 24 V AC 10%, 50 Hz
Power consumption (approx.)	3.5 W (without options), 6.0 W (with options), 13.0 W (with heater)
Dimensions (approx.)	141(W) x 181.9(H) x 379.6(D) mm [5.55(W) x 71.61(H) x 149.45(D) in.]
Weight (approx.)	1.56 kg [55.0 oz.] (without sunshade) 1.76 kg [62.1 oz.] (with sunshade)

NOTE: Specifications subject to change without notice

Camera Set-up Unit VAC-70 (sold separately)

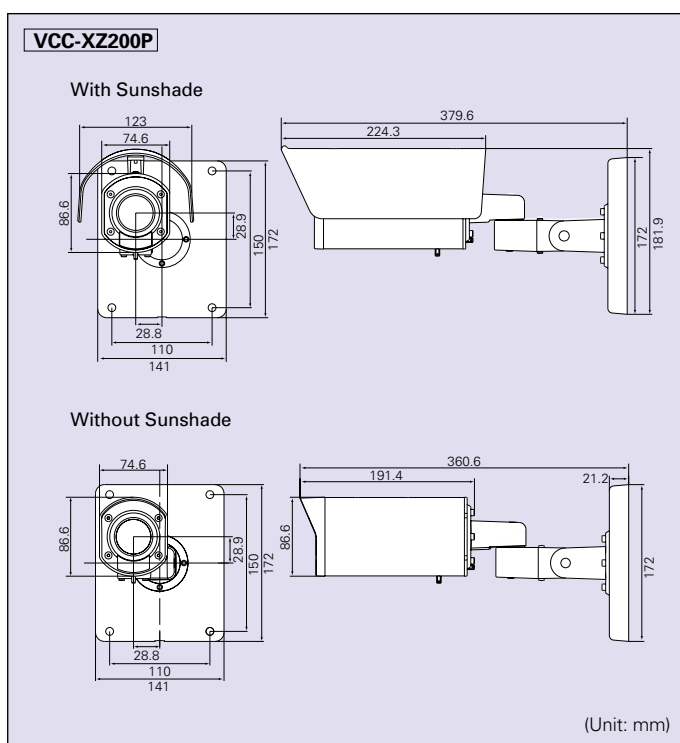
MODEL	VAC-70
Video output terminal	BNC x 1
Camera input terminal	BNC x 1
Environmental conditions	Temperature: -10°C to 50°C [14°F to 122°F], Humidity: 10 to 80%
Power requirement	3V DC, 2 AA / LR6 / 1.5 V batteries
Dimensions	80(W) x 40(H) x 140(D) mm [3.2(W) x 1.6(H) x 5.5(D) in.]
Weight (approx.)	230 g [8.1 oz.] (without batteries)

Optional boards

Network board VA-20LAN	Bandwidth limit: No limit / 128 Kbps to 4 Mbps; Alarm buffer: 8 MB max., adjustable; Interface: 10BASE-T / 100BASE-TX RJ45 terminals, links shown by OSD
SSP+Twisted pair board VA-20ST	Communication protocol Coaxial control: SSP/H-SSP/PELCO-C RS485: SSP/PELCO-D Video out: Coaxial cable / Category 5 LAN cable  (NVT built-in UTP video)
Heater board VA-50H	Operating environment (with power source connected) Temperature: -30°C to +50°C [-22°F to 122°F] (24 V AC only) Humidity: less than 90% RH (no condensation)

Network Function with optional board

Frame rate	Max. 25 IPS (720 x 286 pixels)
Network protocols	TCP, UDP, HTTP, HTTPS, SMTP, NTP, DHCP, FTP, UPnP™
Operating environment	
Computer	IBM PC/AT and compatible machines
OS	Windows® 2000 / Windows® XP home edition / professional
CPU	Pentium® III 800MHz or later
Memory	128MB or more
Interface	10BASE-T / 100BASE-TX
Display card	1,024 x 768 pixels, more than 16,000,000 colors or 24-bit color
Browser	Internet Explorer Ver. 6.0 or later



(Unit: mm)

Compatible devices with horizontal resolution of 520 TVL

Camera

Standard

1/3" Color CCD

DSP High-resolution Camera

VCC-5885P

(12V DC / 24 V AC dual type)

1/3" Color CCD DSP High-resolution Camera

VCC-6585P (12V DC / 24 V AC dual type)

1/3" Color CCD DSP

High-resolution Camera

VCC-6580P

(220 to 230V AC type)

Day/Night

1/3" CCD DSP High-resolution

Day/Night Camera (Color + B/W)

VCC-4795P **DAY NIGHT**

(12V DC / 24 V AC dual type)

1/3" CCD DSP High-resolution

Day/Night Camera (Color + B/W)

VCC-4790P **DAY NIGHT**

(220 to 230V AC type)

Pan Tilt Zoom

1/4" Color CCD DSP High-resolution

Speed Dome Camera

VCC-9000P (24V AC type)

1/4" Color CCD DSP High-resolution

Day/Night Speed Dome Camera (Color + B/W)

VCC-9100P **DAY NIGHT** (24V AC type)

1/4" Color CCD DSP High-resolution Speed Dome Camera

VCC-9300P (24 V AC type)

1/4" Color CCD DSP High-resolution

Day/Night Speed Dome Camera (Color + B/W)

VCC-9400P **DAY NIGHT** (24 V AC type)

Zoom

1/4" Color CCD DSP High-resolution Auto Focus Zoom Camera

VCC-ZM300PA (12V DC / 24 V AC dual type)

1/4" Color CCD DSP High-resolution

Day/Night Auto Focus Zoom Camera (Color + B/W)

VCC-ZM400P **DAY NIGHT**

(12V DC / 24 V AC dual type)

Pan-focus

1/4" Color CCD DSP High-resolution

Day/Night Vandal Resistant Dome Camera

(Color + B/W)

VCC-DP7585P **DAY NIGHT**

(12V DC / 24 V AC dual type)

1/4" Color CCD DSP High-resolution

Indoor mini Dome Camera

VCC-P7575P

(12V DC / 24 V AC dual type)

1/4" Color CCD DSP High-resolution

Indoor mini Network Dome Camera

VCC-P7575PA

(12V DC / 24 V AC dual type)

1/4" Color CCD High-resolution

Weatherproof Day/Night Zoom Camera (Color + B/W)

VCC-XZ200P **DAY NIGHT**

(12V DC / 24 V AC dual type)

Weatherproof

1/4" Color CCD High-resolution Weatherproof

Day/Night Auto Focus Zoom Camera (Color + B/W)

VCC-XZ400P **DAY NIGHT**

(12V DC / 24 V AC dual type)

Recorder

1ch Digital Video Recorder **DSR-300P**

6ch Digital Video Recorder **DSR-3706PA**

9ch Digital Video Recorder **DSR-3709PA**

16ch Digital Video Recorder **DSR-3716PA**

9ch Digital Video Recorder **DSR-5009PA**

16ch Digital Video Recorder **DSR-5016PA**

Monitor

15" High-resolution Color Video Monitor

VMC-8615FP

19" High-resolution Color Video Monitor

VMC-8619PA



***Caution:** Please consult the instruction manual to ensure safe and proper operation of the product.



DI Company of SANYO Electric Co., Ltd. obtained Quality Management System ISO9001 and Environmental Management System ISO14001 certifications.

Distributed by:



SANYO Electric Co., Ltd.

www.sanyosecurity.com

©2006 SANYO Printed in Japan '06.3. AP SMS124